

Installing & Configuring Zebra Printer

1. Download the Zebra latest driver into your desktop from

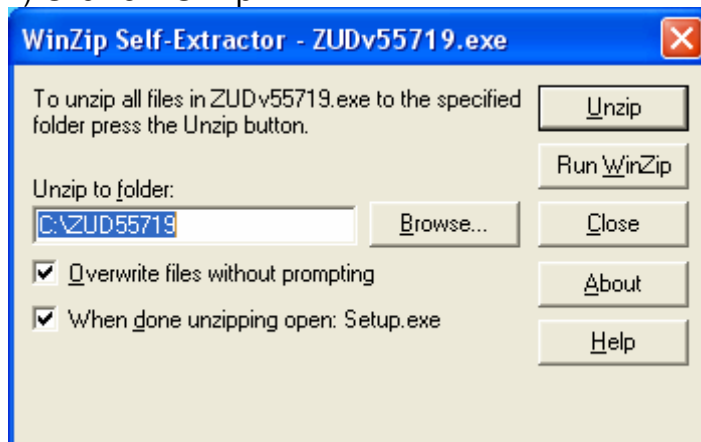
http://www.zebra.com/id/zebra/na/en/index/drivers_downloads/drivers/results.htm?productType=7

2. Install the driver in your pc by clicking on ZUDv55719.exe

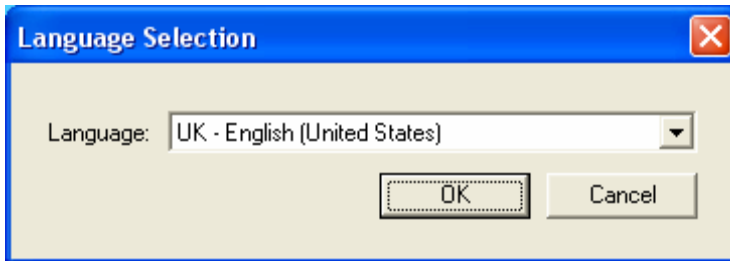
i. click on 'Run'



ii) Click on 'Unzip'



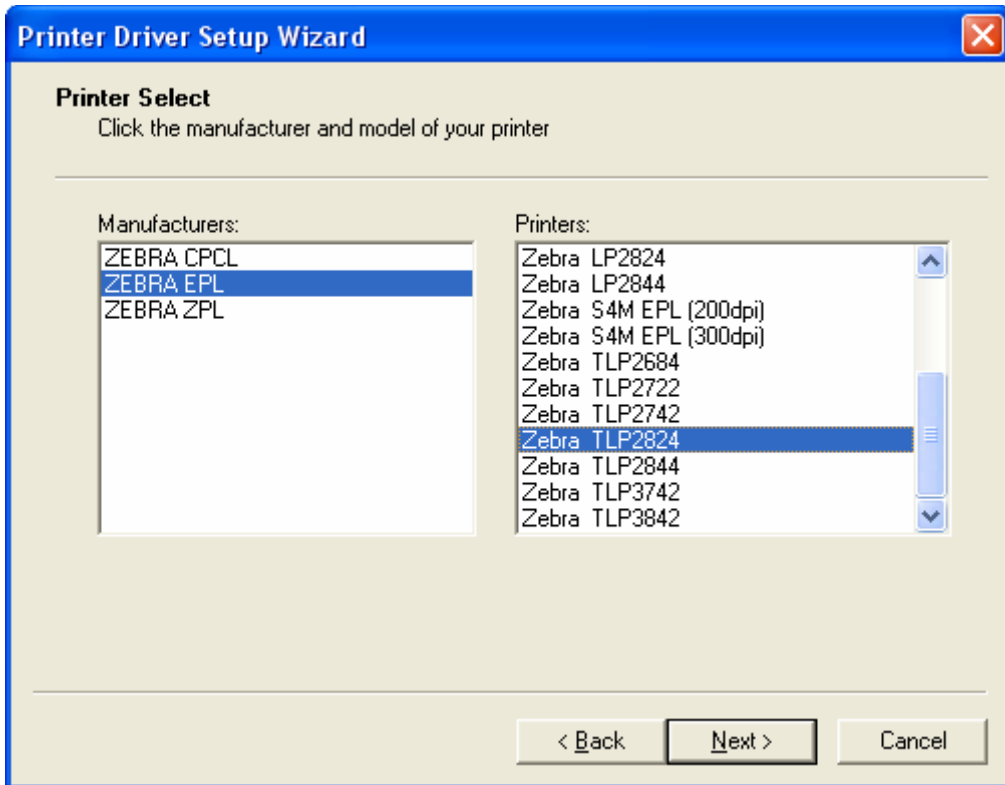
iii) choose default language settings and press 'OK'



iv) click 'Next'



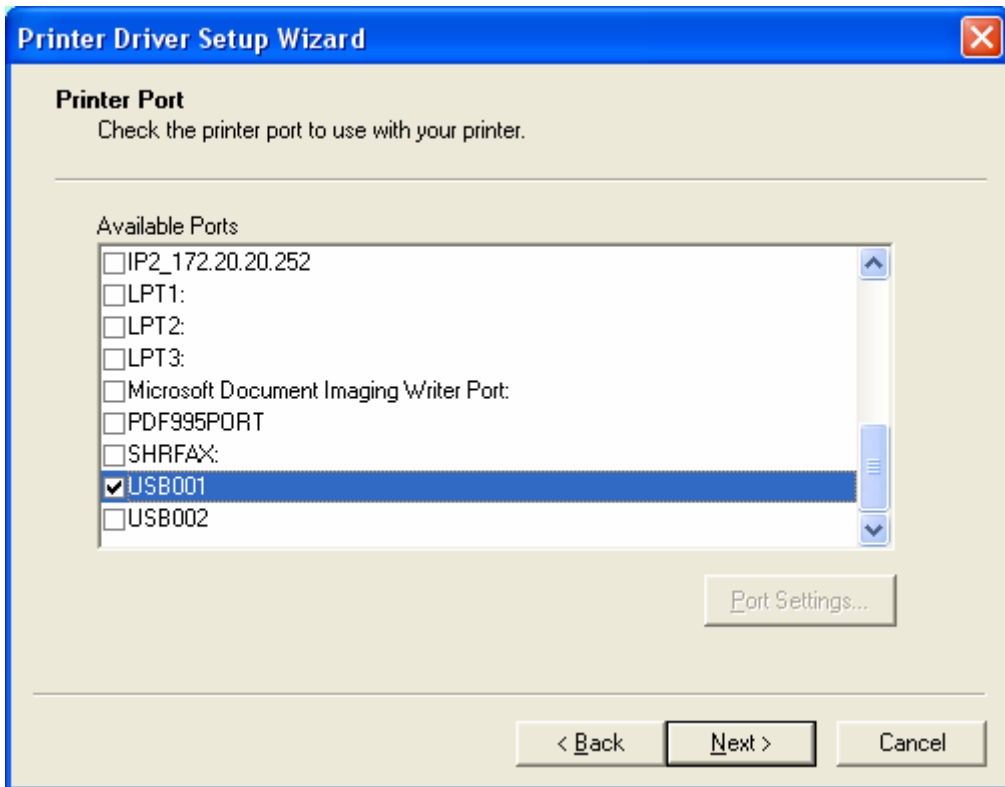
v) choose 'ZEBRA EPL' from left pane and 'Zebra TLP2824' from the right pane and click 'Next'



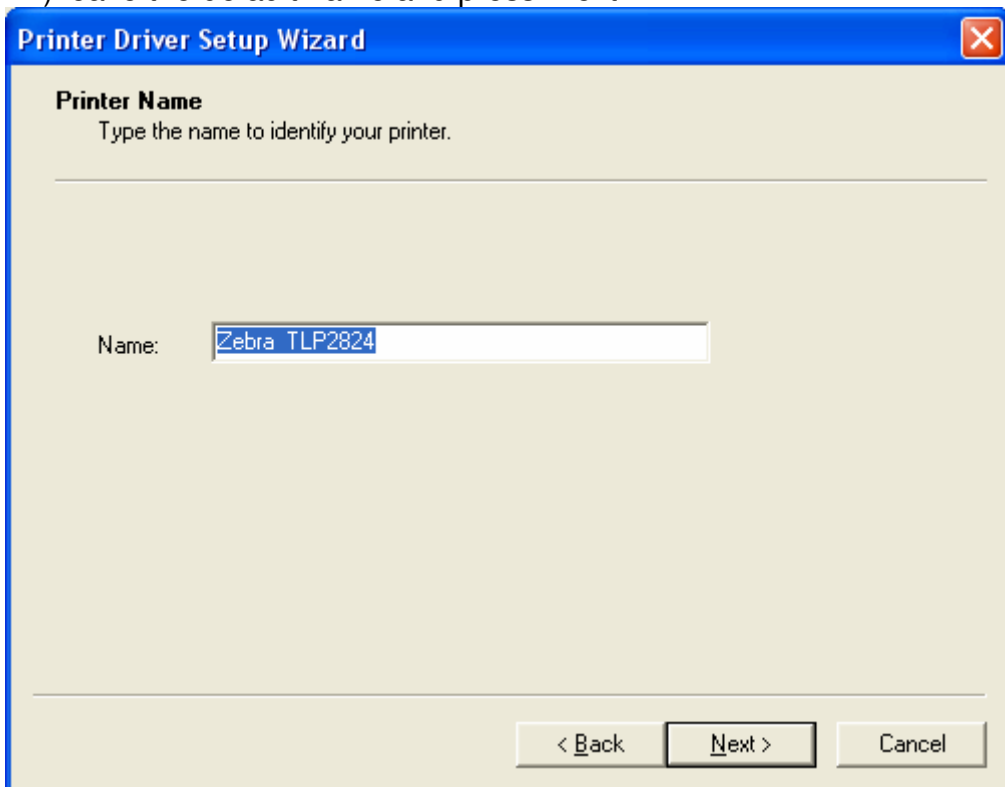
vi) click 'Continue Anyway'



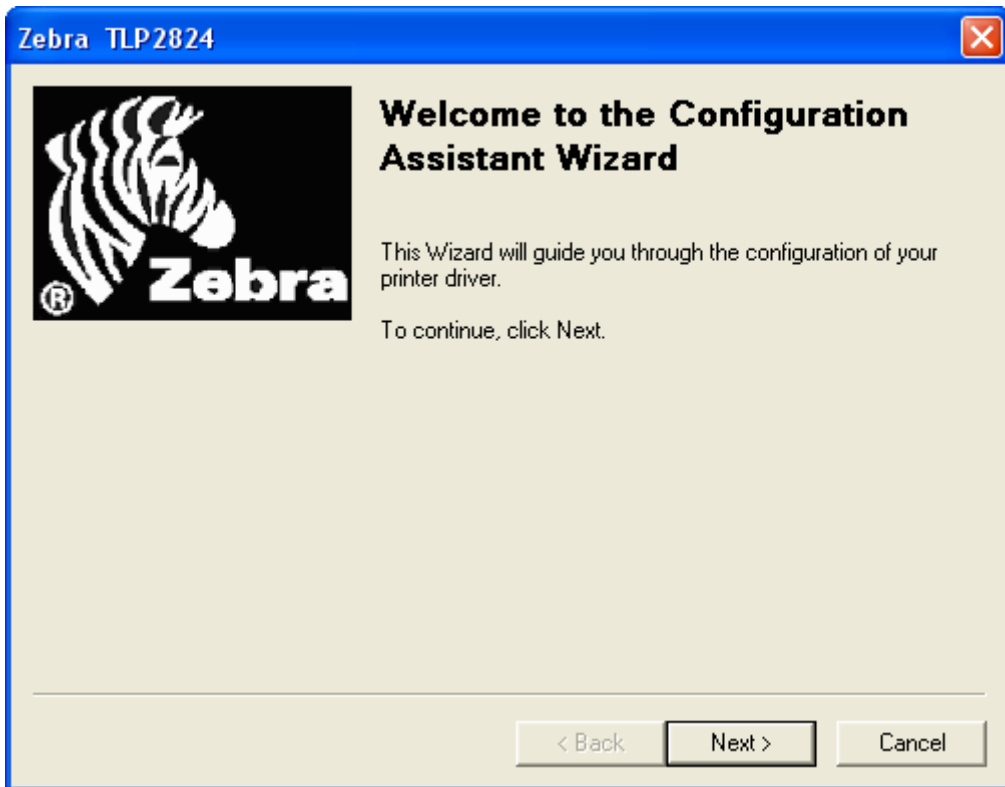
vii) Choose a **USB** port and click 'Next'



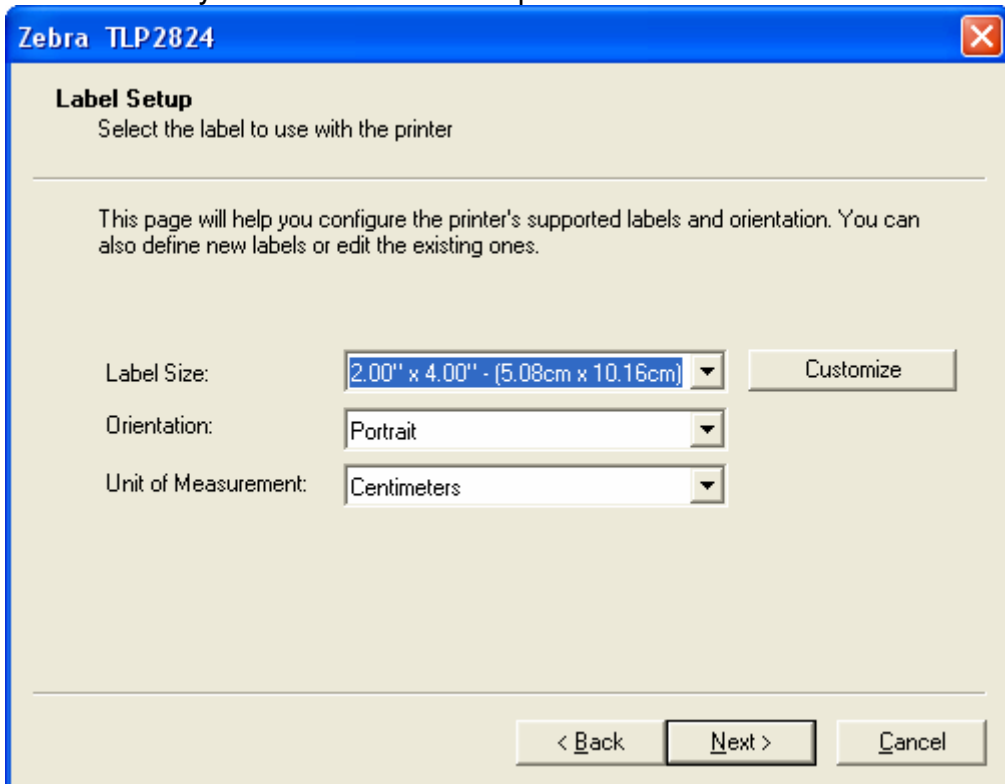
viii) leave the default name and press 'Next'



ix) click 'Next' again



x) then leave all the default values in the following steps and finally click 'Finish' to successfully install the driver and printer.



Zebra TLP2824 ✖

Dispense Mode
Allows you to configure the action performed by the printer after printing each label

Select the action you want to see performed.

None ▾

< Back Next > Cancel

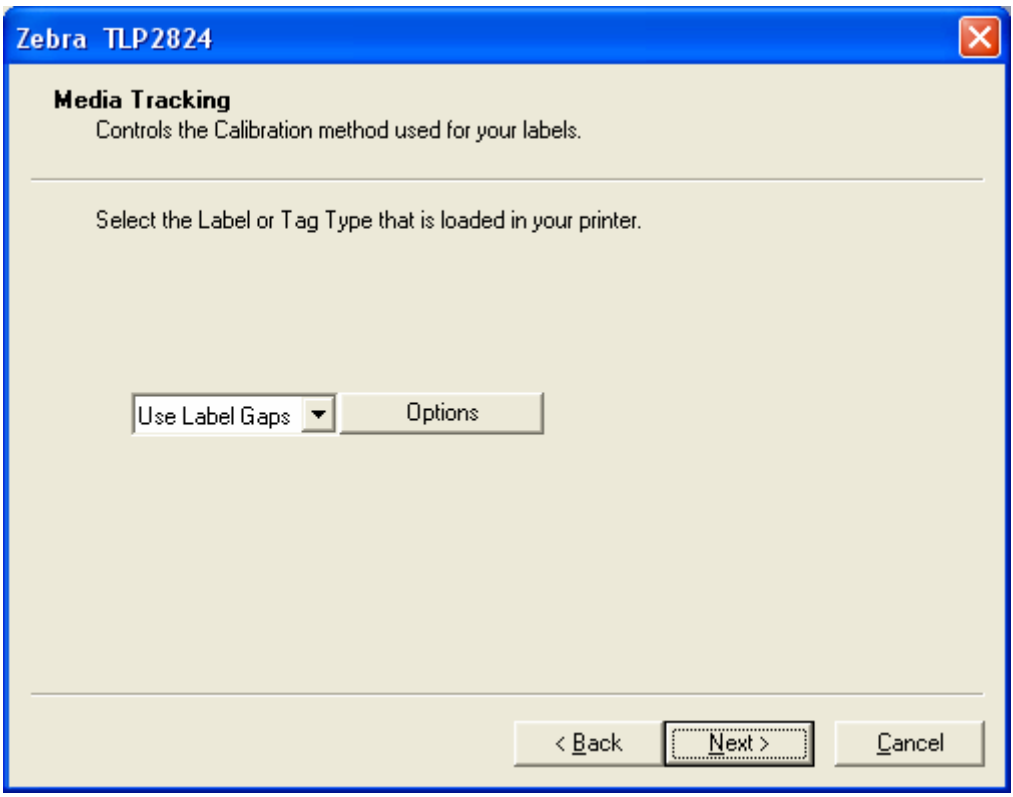
Zebra TLP2824 ✖

Media Type
Used to specify whether a ribbon is being used during the print process or not

Select the Media Type that you have installed.

Thermal Transfer ▾

< Back Next > Cancel

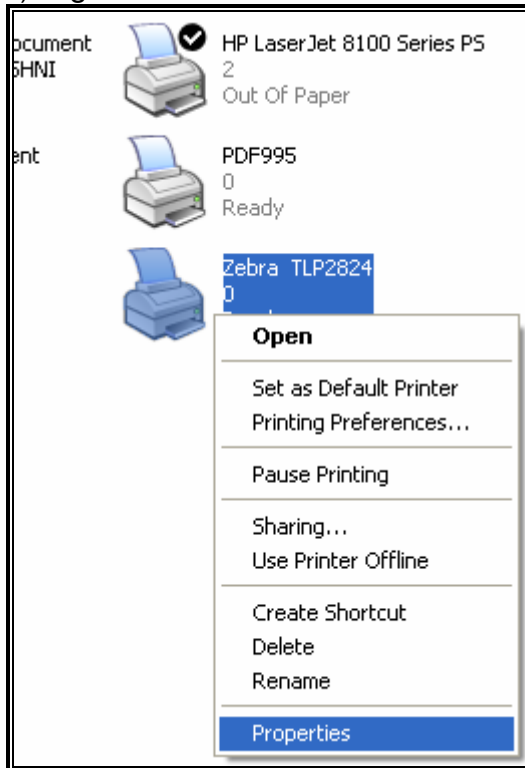


3. Configure the printer

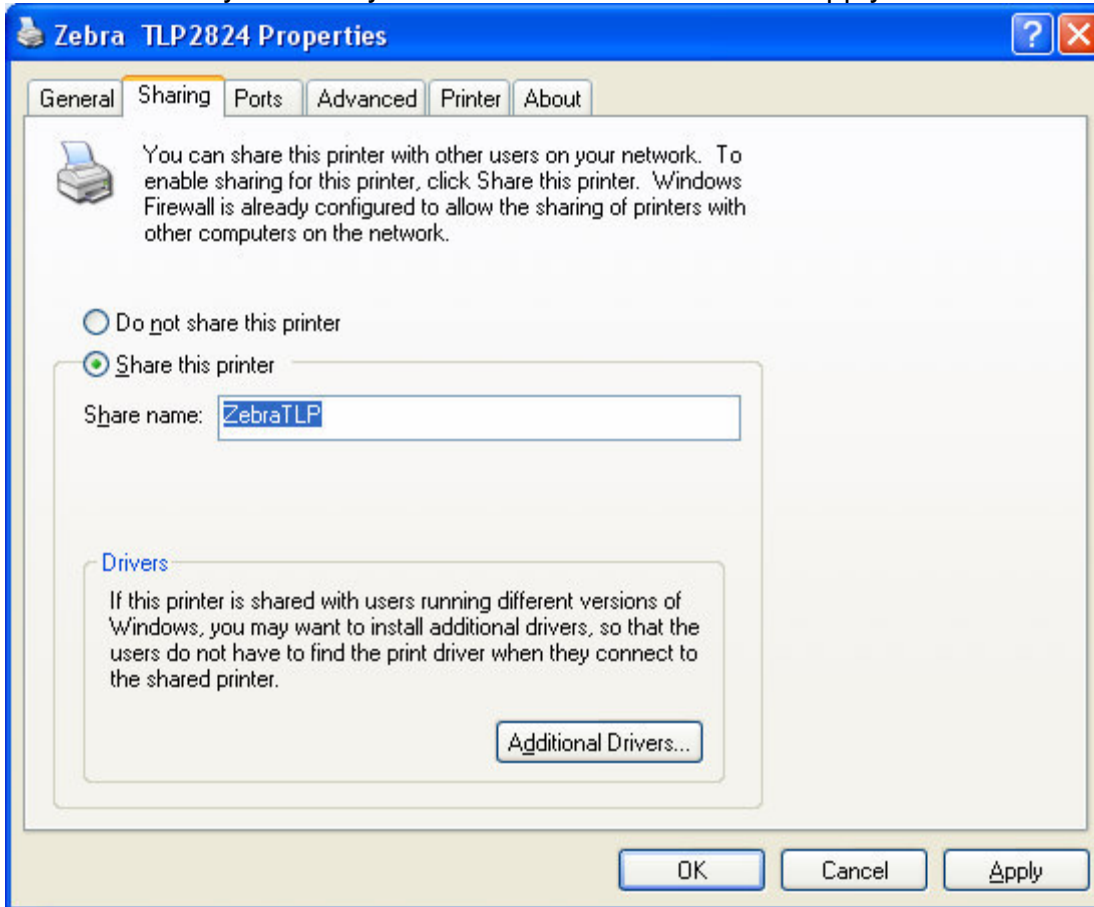
i) Go to 'Printer and faxes' window. Go to 'Start->Printer and Faxes'



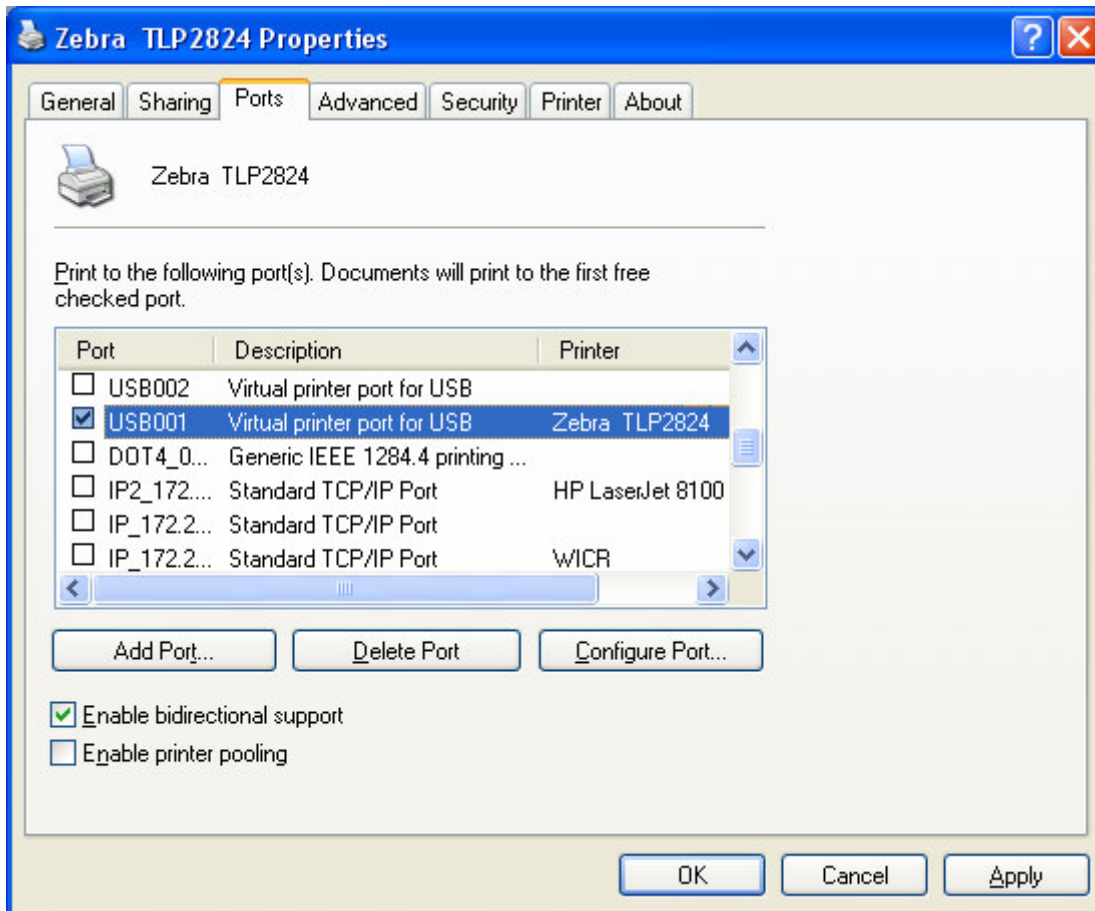
ii) Right click on 'Zebra TLP2824' and choose 'Properties'



iii) Click on 'Sharing' tab and choose 'Share this printer'. Make sure in the 'Share name' text box you exactly have 'ZebraTLP'. Then click 'Apply'.



iv) Click on 'Ports' tab and make sure USB port is selected. Click Ok. Printer is ready to use now.



-----End of manual-----